

An Update on West Howe



1. **West Howe Regeneration Partnership**
2. **Strategic Assessment**
3. **Workshop June 27th 2012**
4. **Next Steps ...**

West Howe Regeneration Partnership Board

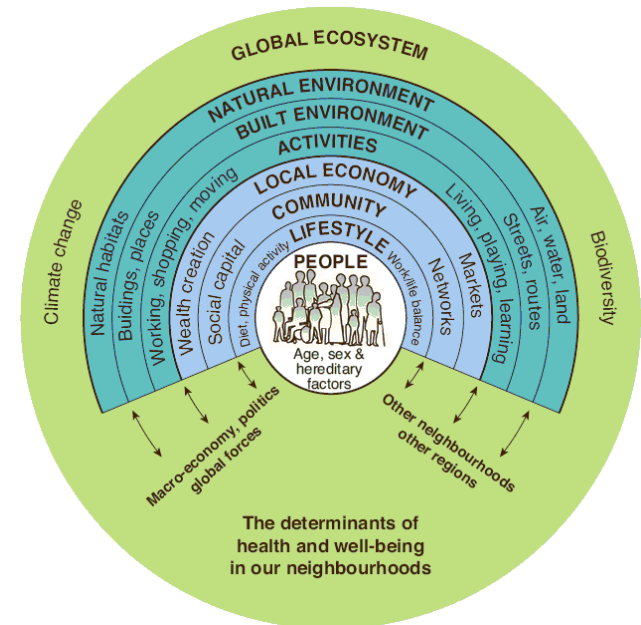
- Chaired by Jane Portman
- Diverse group includes representatives from the community of West Howe
- Following the completion of the strategic assessment the board will refine its governance arrangements, membership, set priorities for action & create a vision for West Howe



Image Courtesy of Google Earth.

Strategic Assessment of West Howe

- Paul Iggulden was commissioned by B2026
- 'Independent' view
- Issues, root causes and what's it like to live in West Howe?
- The assessment will inform actions, engagement with the community & the allocation of resources
- Document available from 13th June
- Final workshop 27th June to launch the report



The issues we are finding



Some challenges for the partnership

- Breaking the cycle of inter-generational behaviour
- Getting to grips with causes, not just dealing with effects
- Ensuring a bottom up approach

An opportunity ...

- Building and adding value to existing engagement that's already in place with the community

Next Steps...

- Strategic Assessment currently being proofed and data checked
- Report will be available from the 13th June
- Development of Communications Strategy with key messages
- Workshop 27th June
- Engagement and Consultation activities with West Howe residents